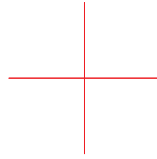
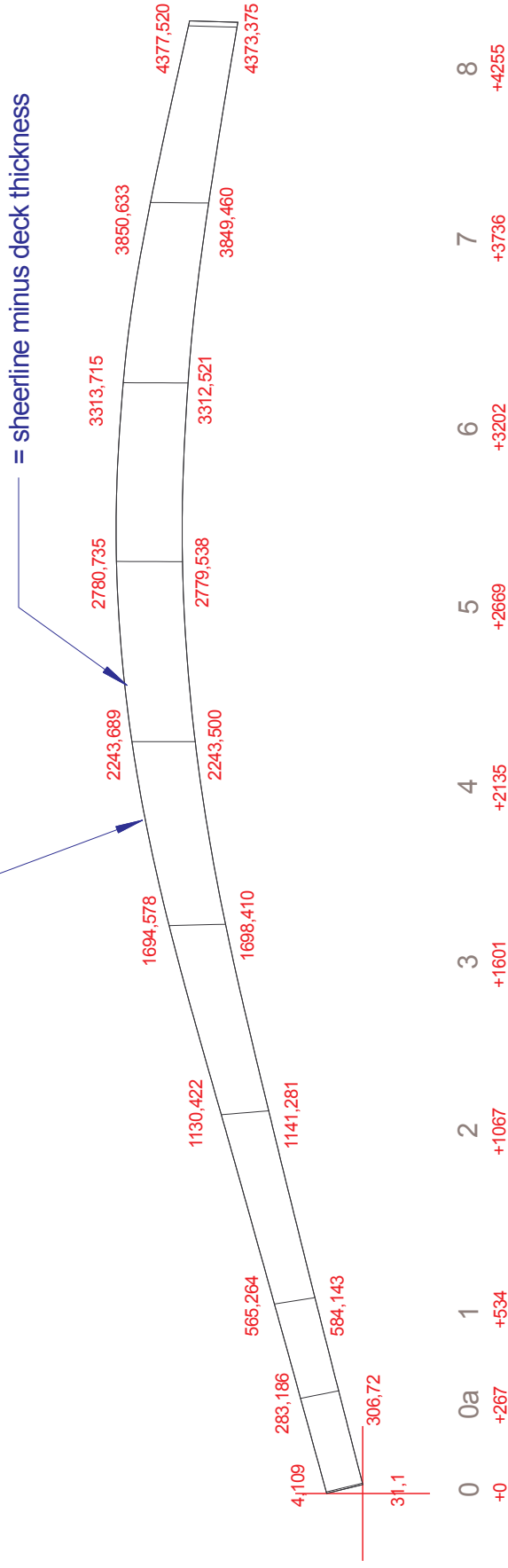


Leave additional width on this edge so that it can be bevelled to accept deck (minimal bevel at bow, increasing to about 45 degrees from amidships aft).



shows coordinate origin (x=0, y=0)

NOTE: Rule 4 m (i): no plank may exceed 160mm in external exposed width. The gunwhale must be of sufficient depth to enable this requirement to be met.

H140 plank 7 (sheer plank)

**HIAZARDOUS 140**

**MERLIN ROCKET**

Copyright: Keith Callaghan 2003, 2004